

# THE RENEWABLE CARBON INITIATIVE

Shape the future of the chemical and material industry



Circular Economy

## MEMBERS OF THE INITIATIVE

### LARGE SUPPLIERS



### SME



\* Board Member

### BRANDS



### START-UPS



### RESEARCH INSTITUTES



### PARTNERS



## WHY JOIN RCI?

RCI is an organization for all companies working in and on renewable chemicals and materials – plastics, composites, fibres and other products can be produced either from biomass, directly via CO<sub>2</sub> utilisation, or recycling. RCI members profit from a unique network of pioneers in the sustainable chemical industry, creating a common voice for the renewable carbon economy.

To officially represent the RCI in Brussels, the RCI is registered in the EU's transparency register under the number 683033243622-34.

## JOIN NOW



Become a part of the Renewable Carbon Initiative (RCI) and shape the future of the chemical and material industry

[www.renewable-carbon-initiative.com](http://www.renewable-carbon-initiative.com)

#RenewableCarbon

[www.linkedin.com/showcase/renewable-carbon-initiative](https://www.linkedin.com/showcase/renewable-carbon-initiative)

## CONTACT

nova-Institut GmbH  
Leyboldstraße 16  
50354 Hürth  
Germany

+49 2233 – 460 14 00  
[contact@nova-institut.de](mailto:contact@nova-institut.de)  
[www.nova-institute.eu](http://www.nova-institute.eu)

## ABOUT RENEWABLE CARBON

Almost three quarter of humanmade GHG emissions are directly related to additional fossil carbon that has been extracted from the ground. Decarbonisation is a good strategy for the energy and transport sectors, but strictly speaking not feasible for chemicals and materials, because most of them are based on carbon. On the opposite, there is a lasting and even increasing need for carbon for chemicals and materials.

The key challenge is therefore to replace fossil carbon by alternative carbon sources to defossilise chemicals and materials. Those alternative carbon sources are biomass, CO<sub>2</sub> and recycling of carbon-containing waste streams (bio and plastic waste). We call these alternative carbon sources “renewable carbon”.

### THE DEFINITION

Renewable Carbon entails all carbon sources that avoid or substitute the use of any additional fossil carbon from the geosphere.

Renewable Carbon are all carbon sources above the ground, carbon in the atmosphere, biosphere, and technosphere – but not from the geosphere. Renewable Carbon circulates between biosphere, atmosphere or technosphere, creating sustainable carbon cycles. In contrast, fossil carbon is the carbon below the ground.

The equivalent to decarbonisation in the energy sector is defossilisation – a transition to renewable carbon in the chemical and materials industries. Decarbonisation is not an option for the chemical industry which is entirely based on carbon, therefore, defossilisation is key.

## RCI OFFERS ITS MEMBERS



### ADVOCACY

RCI drives the message of renewable carbon, prepares position papers on relevant aspects and represents its stakeholders to the public and political decision-makers.



### REPORTS AND PAPERS

Science-based reports and papers on the concept of renewable carbon and specific aspects to create solid argumentation in favor of the transformation.



### NETWORKING

Nobody can do it alone! Together with other RCI members you will create an eco-system for renewable carbon solutions – the renewable carbon community. All RCI members meet twice a year, once in person, once online.



### SHAPING THE INITIATIVE

Members actively shape the direction of the initiative and the renewable carbon strategy.



### WORKING GROUPS

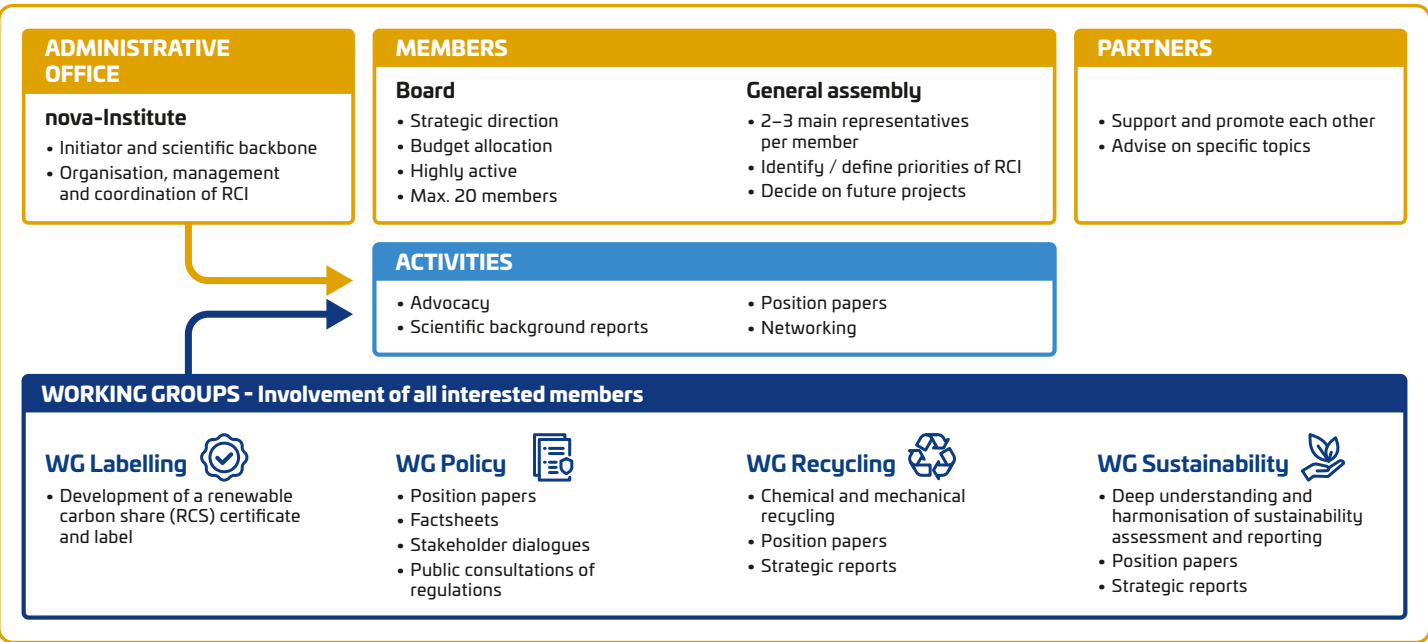
Members are actively involved in RCI activities via different working groups. Currently, these are “Policy”, “Labeling”, “Recycling” and “Sustainability”.



### VISIBILITY

Members are part of the RCI communication activities and therefore highly visible and convey credibility. Get recognised as a pioneer in the transition to renewable carbon.

## THE RENEWABLE CARBON INITIATIVE



## THE AIM

The aim of the Renewable Carbon Initiative (RCI) is to support and speed up the transition from fossil carbon to renewable carbon for all organic chemicals and materials.

RCI addresses the core problem of climate change, which is extracting and using additional fossil carbon from the ground that will eventually end up in the atmosphere. Companies are encouraged to focus on phasing out fossil resources and to use renewable carbon instead.

The initiative wants to drive this message, initiating further actions by bringing stakeholders together, providing information and shaping policy to strive for a climate-neutral circular economy.

## THE VISION

Fossil carbon shall be completely substituted by renewable carbon, which is carbon from alternative sources: biomass, CO<sub>2</sub> and recycling.

## RENEWABLE CARBON

