

# THE RENEWABLE CARBON INITIATIVE

Shape the future of the chemical and material industry



Circular Economy

## MEMBERS OF THE INITIATIVE

### LARGE SUPPLIERS



### SME



\* Board Member

## BRANDS



## START-UPS



## RESEARCH INSTITUTES



## PARTNERS



## WHY JOIN RCI?

RCI is an organisation for all companies working in and on renewable chemicals and materials – plastics, composites, fibres and other products can be produced either from biomass, CCU or recycling. RCI members profit from a unique network of pioneers in the sustainable chemical industry, creating a common voice for the renewable carbon economy.

To officially represent the RCI in Brussels, the RCI is registered in the EU's transparency register under the number 683033243622-34.

## JOIN NOW



Become a part of the Renewable Carbon Initiative (RCI) and shape the future of the chemical and material industry

[www.renewable-carbon-initiative.com](http://www.renewable-carbon-initiative.com)

#RenewableCarbon

[www.linkedin.com/showcase/renewable-carbon-initiative](http://www.linkedin.com/showcase/renewable-carbon-initiative)



Access to RCI's Scientific Background Reports and Position Papers

[renewable-carbon-initiative.com/media/library](http://renewable-carbon-initiative.com/media/library)

## CONTACT

nova-Institut GmbH

Leyboldstraße 16  
50354 Hürth  
Germany

+49 2233 – 460 14 00

verena.roberts@nova-institut.de  
[www.nova-institute.eu](http://www.nova-institute.eu)

## ABOUT RENEWABLE CARBON

Almost three quarter of humanmade GHG emissions are directly related to additional fossil carbon that has been extracted from the ground. Decarbonisation is a good strategy for the energy and transport sectors, but strictly speaking not feasible for chemicals and materials, because most of them are based on carbon. On the opposite, there is a lasting and even increasing need for carbon for chemicals and materials.

The key challenge is therefore to replace fossil carbon by alternative carbon sources to defossilise chemicals and materials. Those alternative carbon sources are biomass, CO<sub>2</sub> and recycling of carbon-containing waste streams (bio and plastic waste). We call these alternative carbon sources "renewable carbon".

### THE DEFINITION

Renewable Carbon entails all carbon sources that avoid or substitute the use of any additional fossil carbon from the geosphere.

Renewable Carbon are all carbon sources above the ground, carbon in the atmosphere, biosphere, and technosphere – but not from the geosphere. Renewable Carbon circulates between biosphere, atmosphere or technosphere, creating sustainable carbon cycles. In contrast, fossil carbon is the carbon below the ground.

The equivalent to decarbonisation in the energy sector is defossilisation – a transition to renewable carbon in the chemical and materials industries. Decarbonisation is not an option for the chemical industry which is entirely based on carbon, therefore, defossilisation is key.

## MEMBERSHIP BENEFITS

### Advocating for renewable carbon

RCI is at the forefront of advocating for the transition from fossil to renewable carbon. As a member, you'll actively contribute to shaping future policy and driving the transition, ensuring your voice is heard in the movement towards defossilisation.

### Contribute to leading scientific reports and positions

RCI's publications are instrumental in advocating for renewable carbon. As a member, you contribute your knowledge and insights, shaping the discourse and decisions that are transforming our economy.

### Connect with a vibrant network

Joining RCI means connecting with a diverse network spanning the entire value chain, fostering collaboration and innovation. Supported by our partners, you'll be at the heart of a growing community that drives positive change in the renewable carbon landscape.

### Get cloud access to internal RCI documents

Gain access to the internal RCI cloud, containing draft documents, policy consultations, presentations, and factsheets. It's everything you need to stay ahead of the curve.

### Shape the future of the RCI

Your membership gives you the opportunity to shape the direction of RCI, by proposing new ideas, participating in ongoing projects or joining the board. Your membership funds RCI's activities, actively enabling collaboration towards a sustainable future.

### Join specialised working groups

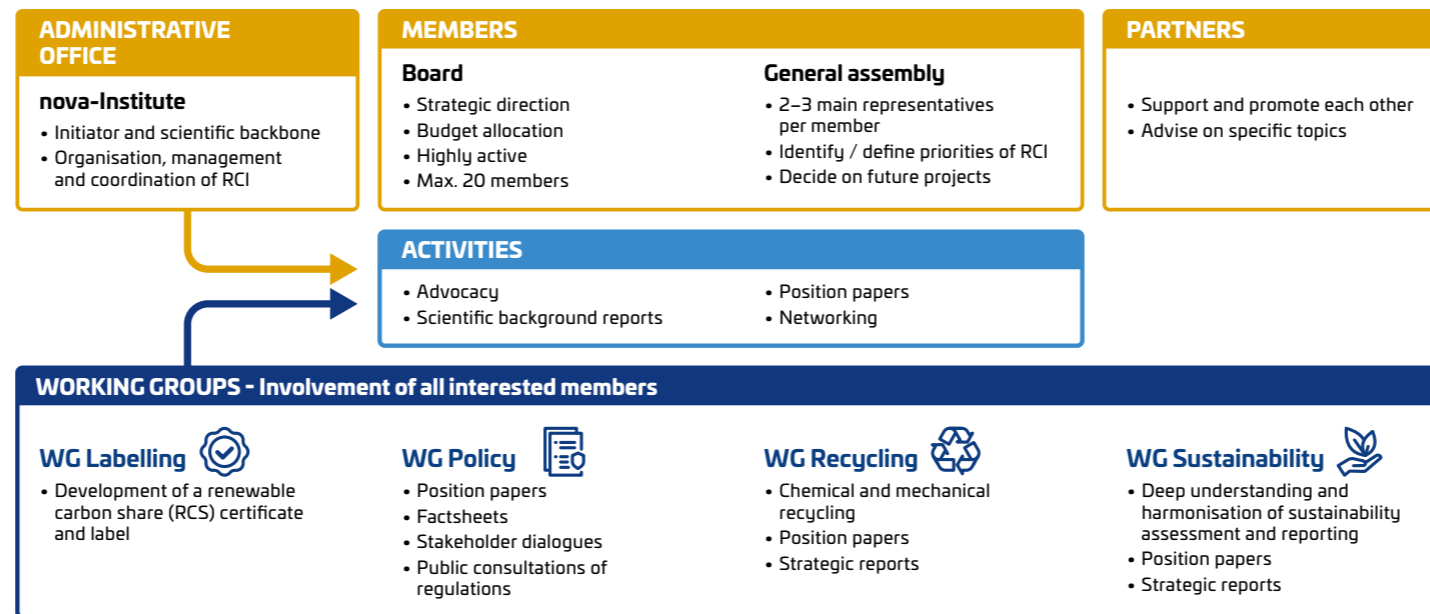
Engage in specialised working groups focused on critical aspects such as policy, labelling, recycling, and sustainability. Together, as a trusted pool of expertise, you'll tackle challenges and drive solutions forward.

### Increase your visibility

As an RCI member, you'll be recognised as a leader in the transition to renewable carbon. Benefit from increased visibility through our communications activities and share your own successes to build credibility on your path to sustainability.

### Enjoy exclusive discounts

Benefit from exclusive discounts on conferences and commercial market reports by nova-Institute, along with additional benefits through our partners. Your membership brings added value beyond just networking and collaboration.



## THE AIM

The aim of the Renewable Carbon Initiative (RCI) is to support and speed up the transition from fossil carbon to renewable carbon for all organic chemicals and materials.

RCI addresses the core problem of climate change, which is extracting and using additional fossil carbon from the ground that will eventually end up in the atmosphere. Companies are encouraged to focus on phasing out fossil resources and to use renewable carbon instead.

The initiative wants to drive this message, initiating further actions by bringing stakeholders together, providing information and shaping policy to strive for a climate-neutral circular economy.

## THE VISION

Fossil carbon shall be completely substituted by renewable carbon, which is carbon from alternative sources: biomass, CO<sub>2</sub> and recycling.

## RENEWABLE CARBON

